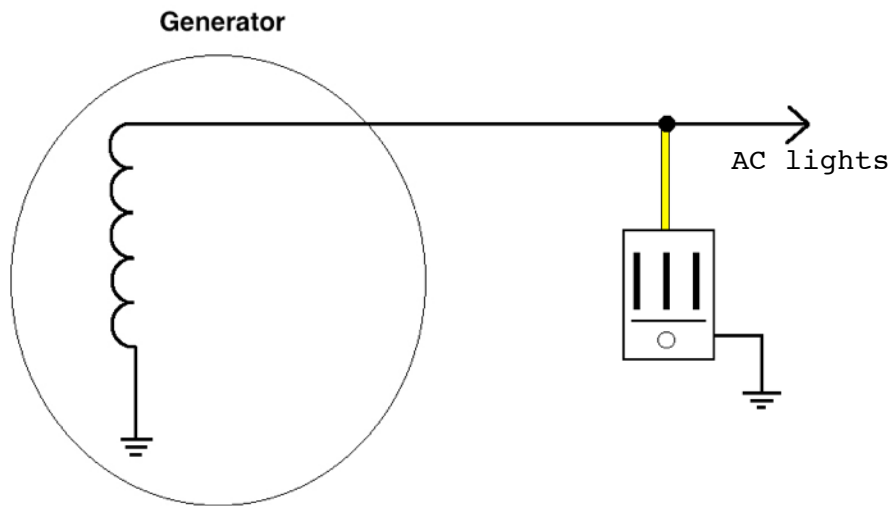


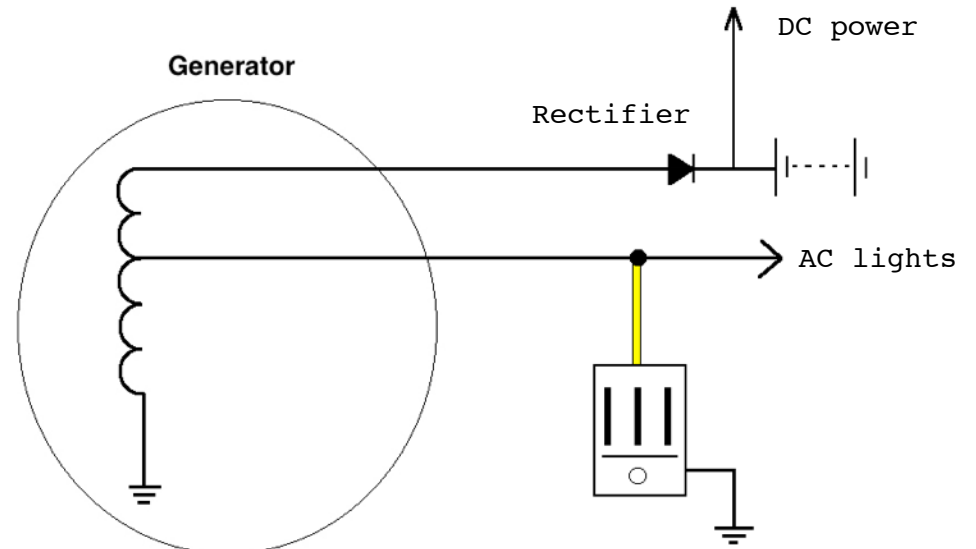
AC regulators connect across the generator winding so that excess voltage can be dumped to ground. If fitting one to a machine that previously did not have a regulator, follow the diagrams below. When replacing a failed AC regulator, simply connect the yellow wire to the feed from the generator and earth the case. Where there are two wires, one will be the earth, you will need the bike's manual and wiring diagram to aid you in identifying the wires if you are not sure which is which.

The regulator case must have a good earth back to the generator. AC systems require the earth to be as good as the 'feed' wire. Although some older systems rely on the engine mounts alone to give the earth, this is not good practice. Normally the wiring loom provides an earth wire, ensure the regulator case is earthed to this. Adding an earth wire to the mounting bolt, direct to the engine case can help where problems persist.

1. AC lights only



2. AC lights & DC battery charging



Regulator controls both halves of the generator from its centre tapping



AC regulators were invented to prevent bulbs blowing on low cost lighting systems, they control the highest peaks of the generator's output to give rudimentary voltage regulation. They are not intended to accurately control load like a full regulator rectifier does.

DRG: AC Regulator Wiring. Mar 2018

©Rex's Speed Shop. All Rights Reserved 2018