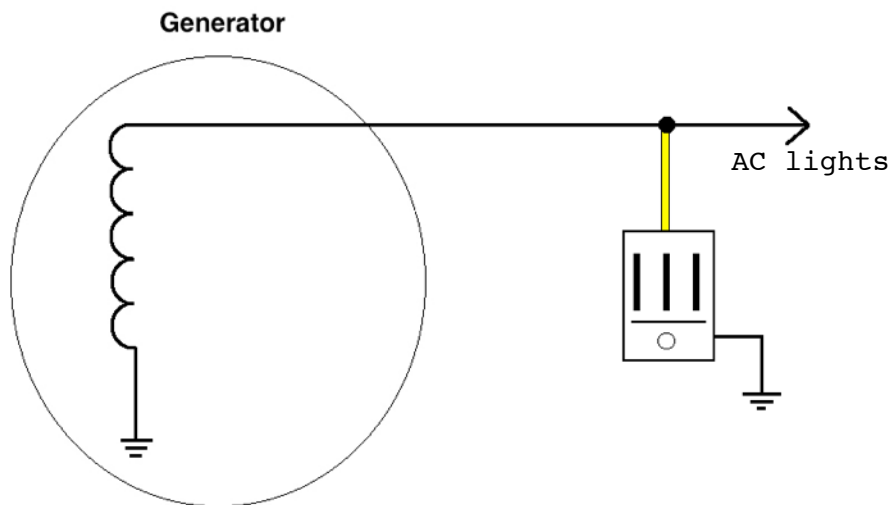


AC regulators connect to the generator winding so that excess voltage can be dumped to prevent bulbs blowing.

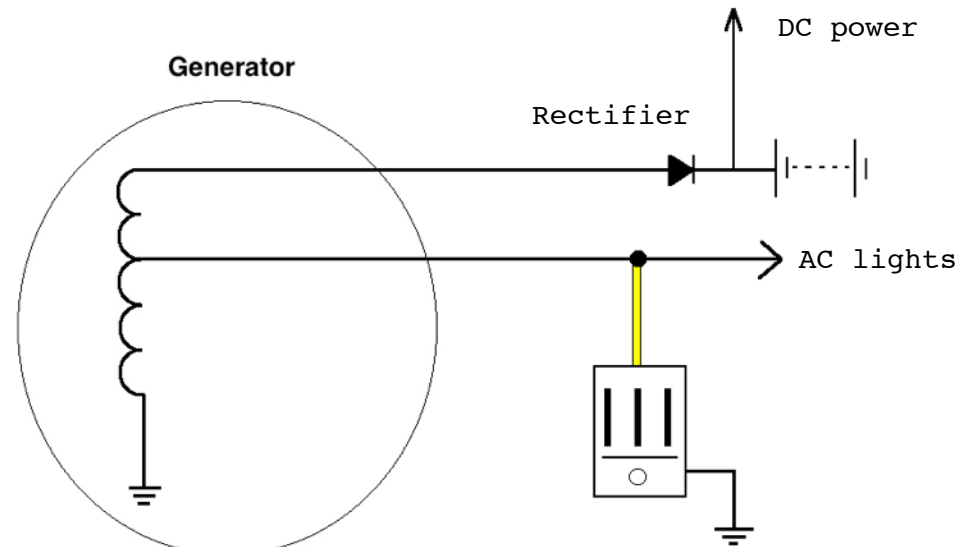
When fitting an AC regulator simply connect the yellow wire to the feed from the generator and earth the case as shown below. The regulator case must have a good earth directly to the generator. Where there are two wires from the loom, one will be earth, the other will connect to the regulator's yellow. You'll need a multimeter to check which is which or the wiring diagram.

AC systems require the earth to be as good as the feed wire. Relying on the engine mounts is not good practise. Where problems persist adding an earth wire to the regulator mounting bolt, direct to the engine case can help. Poor earthing is the most common cause of problems.

1. AC lights only



2. AC lights & DC battery charging



Regulator controls both halves of the generator from its centre tapping



AC regulators prevent bulbs blowing on low cost lighting systems. They control the highest peaks and surges of the generator's output to give rudimentary voltage regulation. They are not intended to accurately control load like a full regulator rectifier.

DRG: AC Regulator Wiring. Dec 2018

©Rex's Speed Shop 2018. All Rights Reserved